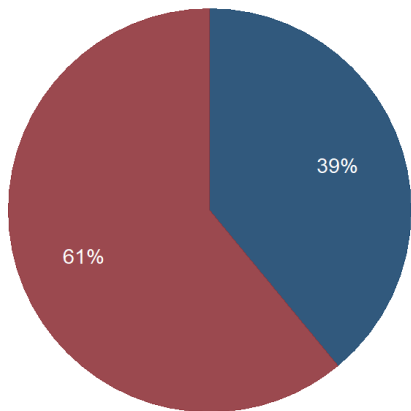


# Kentucky Quarterly Coal Report

January to March 2019

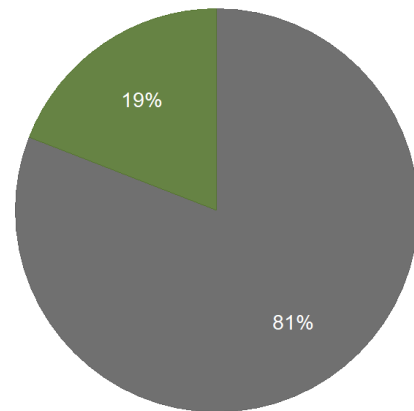
Kentucky Coal Production by Region, Q1-2019



Legend: Eastern Kentucky (Blue), Western Kentucky (Red)

Kentucky Energy Database, EEC-OEP & US-DOL-MSHA-MDRS Queried on: 7 May 2019

Kentucky Coal Production by Mine Type, Q1-2019



Legend: Underground (Grey), Surface (Green)

Kentucky Energy Database, EEC-OEP & US-DOL-MSHA-MDRS Queried on: 7 May 2019

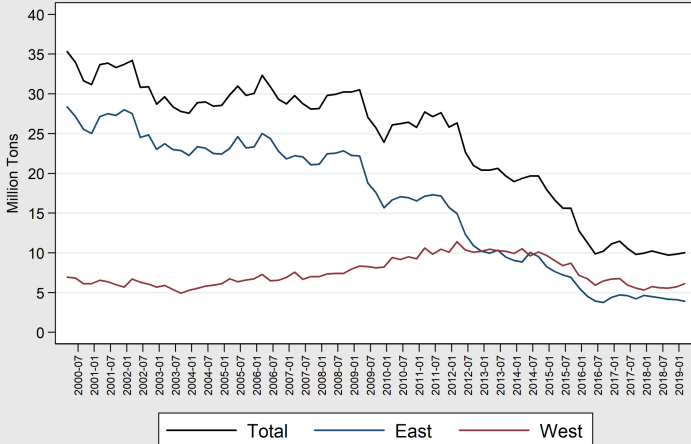
Region	Q1 Tonnage	YOY Change	Quarter
<b>Total</b>	<b>10,019,590</b>	<b>-2.2%</b>	<b>+1.8%</b>
<b>West KY</b>	<b>6,114,327</b>	<b>+6.2%</b>	<b>+6.8%</b>
<b>East KY</b>	<b>3,905,263</b>	<b>-13.0%</b>	<b>-5.2%</b>

While year-over-year production declined by 2.2 percent, quarterly production increased by 1.8 percent.

Mine Type	Q1 Tonnage	YOY Change	Quarter
<b>Total</b>	<b>10,019,590</b>	<b>-2.2%</b>	<b>+1.8%</b>
<b>Underground</b>	<b>8,107,407</b>	<b>+0.4%</b>	<b>+3.9%</b>
<b>Surface</b>	<b>1,912,183</b>	<b>-11.9%</b>	<b>-6.3%</b>

Kentucky underground mines experienced an increase of 0.4 percent on a year-over-year basis and a 3.9 percent increase from the previous quarter.

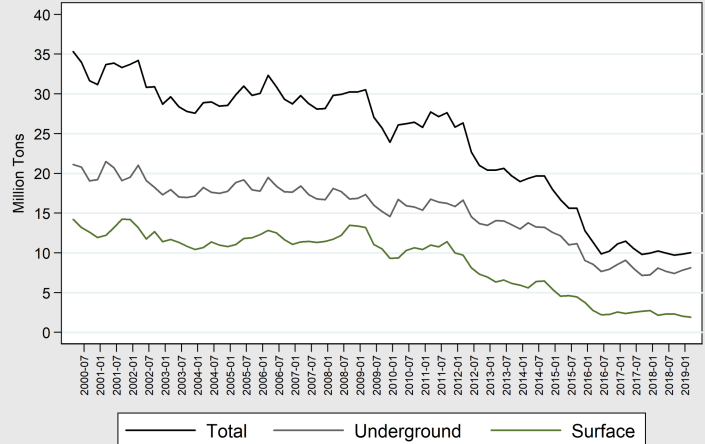
Kentucky Quarterly Coal Production by Region, 2000-2019



Kentucky Energy Database, EEC-OEP & US-DOL-MSHA-MDRS Queried on: 7 May 2019

Eastern Kentucky decreased output by 13 percent from the first quarter of 2018 to 3.9 million tons. Western Kentucky increased output by 6.2 percent to 6.1 million tons. Western Kentucky mines accounted for 61 percent of Kentucky coal production while eastern Kentucky accounted for 39 percent.

Kentucky Quarterly Coal Production by Mine Type, 2000-2019

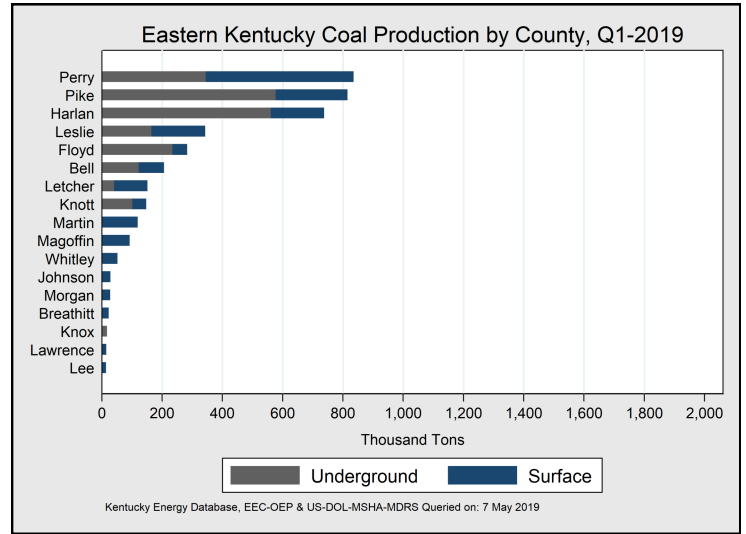
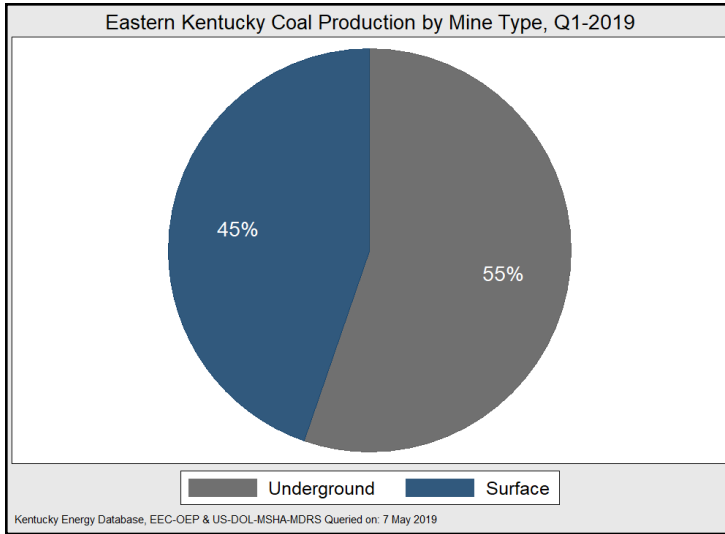


Kentucky Energy Database, EEC-OEP & US-DOL-MSHA-MDRS Queried on: 7 May 2019

In the first quarter of 2019, surface mines in Kentucky produced just under 2 million tons of coal, a 6.3 percent decrease from the fourth quarter of 2018. Underground mines accounted for 81 percent of coal production in the Commonwealth, while surface mines contributed 19 percent.

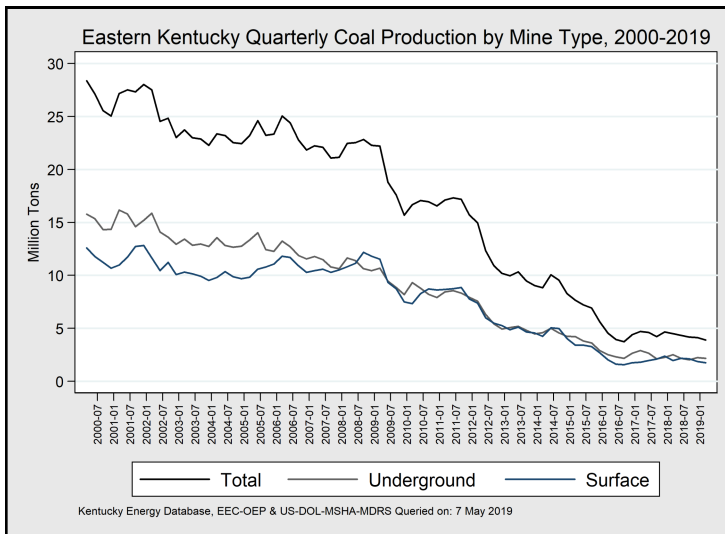
# Eastern Kentucky Coal Production

January to March 2019



Mine Type	Q1 Tonnage	YOY Change	Quarter Change
<b>Total</b>	<b>3,905,263</b>	<b>-13.0%</b>	<b>-5.2%</b>
<b>Underground</b>	<b>2,161,745</b>	<b>-14.2%</b>	<b>-3.7%</b>
<b>Surface</b>	<b>1,743,518</b>	<b>-11.6%</b>	<b>-6.9%</b>

Surface production in eastern Kentucky decreased by 6.9 percent from the fourth quarter of 2018.



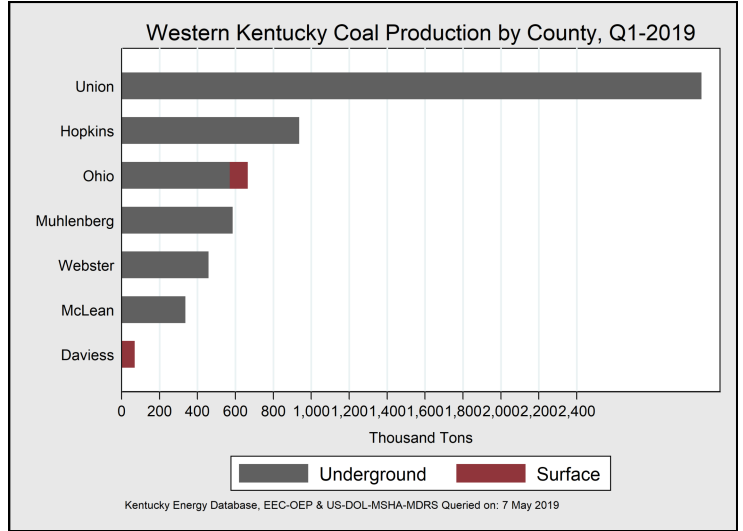
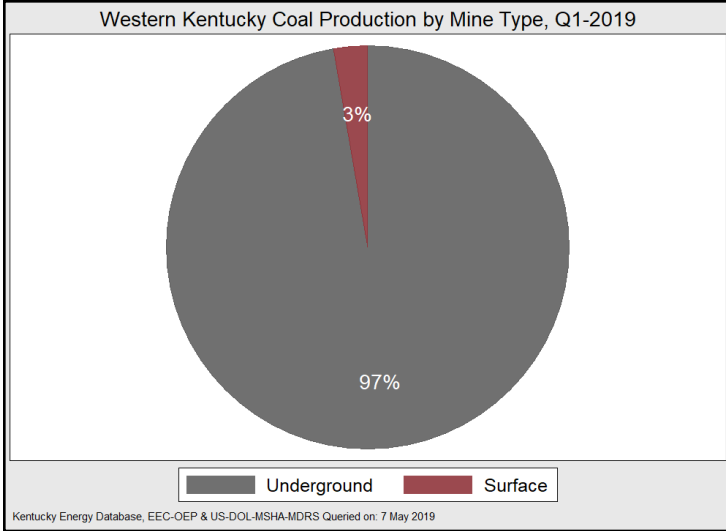
Year-over-year surface production decreased by 11.6 percent. Underground production decreased by 14.2 percent from the first quarter of 2018 and decreased by 3.7 percent from the previous quarter.

Eastern County	Q1 Tons	YOY Change	Quarter Change
Perry	835,801	-17.1%	-4.5%
Pike	815,061	-31.5%	-22.9%
Harlan	737,524	-8.5%	+16.1%
Leslie	343,084	+29.4%	+14.4%
Floyd	282,960	+34.8%	-2.8%
Bell	206,223	-21.3%	+3.2%
Letcher	151,396	-13.7%	+6.5%
Knott	147,058	+0.9%	+2.6%
Martin	119,028	-	+50.3%
Magoffin	92,250	-20.6%	-18.0%
Whitley	51,939	-23.1%	-1.1%
Johnson	28,774	-68.6%	-67.0%
Morgan	28,223	+36.5%	-4.3%
Breathitt	23,320	-62.6%	-62.4%
Knox	16,958	-65.7%	-37.1%
Lawrence	14,542	-28.8%	-46.8%
Lee	14,280	-	-

Preliminary data indicate that Perry County was the top coal producing county in eastern Kentucky during the first quarter of 2019 by mining just over 835 thousand tons, a 4.5 percent decrease from the previous quarter and a 17.1 percent decrease on a year-over-year basis. Pike County produced 815 thousand tons to rank second in coal production in eastern Kentucky. Harlan remained third in production with 737 thousand tons.

# Western Kentucky Coal Production

January to March 2019



Mine Type	Q1 Tonnage	YOY Change	Quarter
Total	6,114,327	+6.2%	+6.8%
Underground	5,945,662	+6.9%	+7.0%
Surface	168,665	-16.2%	+0.7%

County	Q1 Tonnage	YOY Change	Quarter Change
Union	3,058,364	+25.7%	+17.3%
Hopkins	936,150	-7.4%	+12.5%
Ohio	665,789	-4.3%	-1.5%
Muhlenberg	585,946	-5.6%	-2.3%
Webster	458,875	-28.6%	-24.1%
McLean	336,405	+9.8%	+1.9%
Daviess	69,640	+43.8%	-0.6%

Western Kentucky surface mines produced 168 thousand tons, a 0.7 percent increase from the previous quarter.

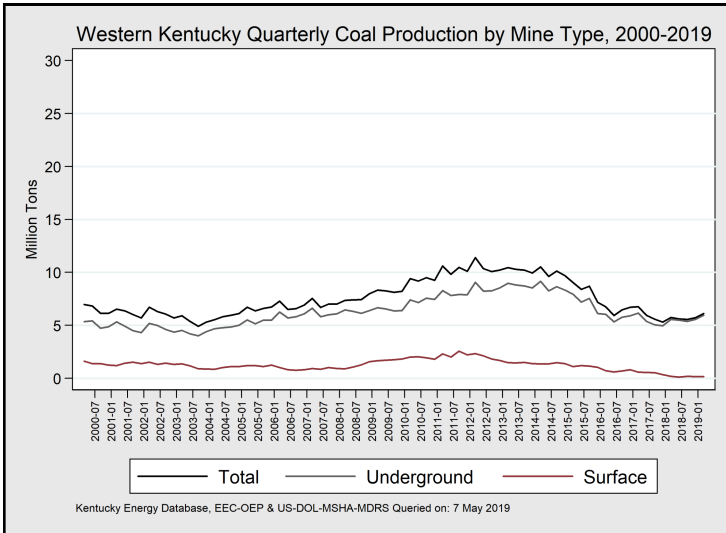


Photo courtesy of the Kentucky Coal Association.

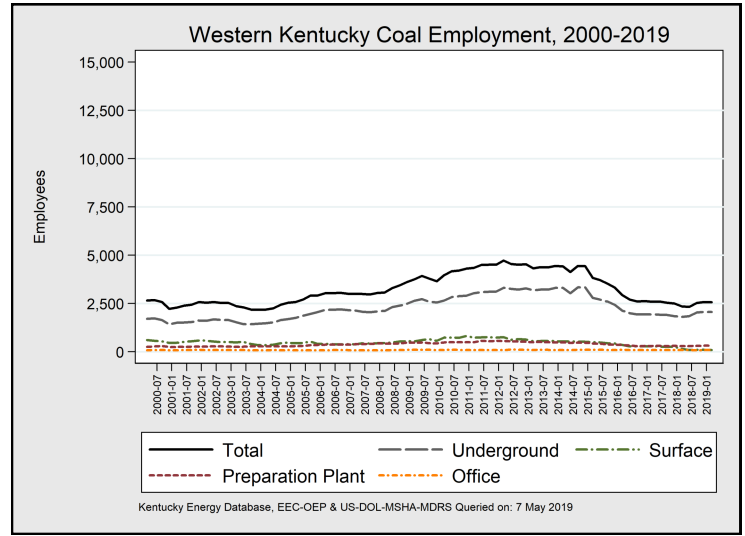
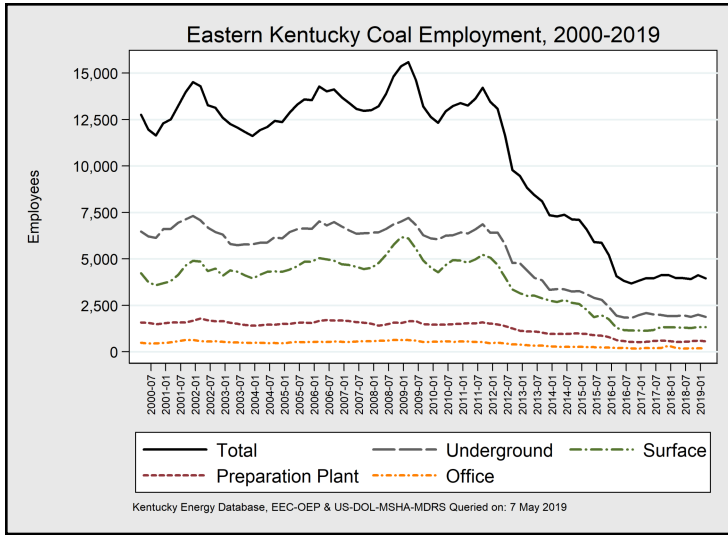
Western Kentucky coal production increased by 6.2 percent on a year-over-year basis, to just over 5.9 million tons. Underground production increased by 7 percent from the fourth quarter of 2018 and increased by 6.9 percent on a year-over-year basis.

Union County ranked first in coal production in western Kentucky, followed by Hopkins County. Union County experienced the second largest year-over-year production increase at 25.7 percent and the largest production increase from the previous quarter at 17.3 percent. Daviess County experienced the largest year-over-year increase in production at 43.8 percent.

Union County mined just over 3 million tons of coal during the 1st quarter of 2019, a 17.3 percent increase from the previous quarter and 25.7 percent increase on a year-over-year basis.

# Kentucky Coal Mine Employment

January to March 2019



East KY	Q1	YOY Change	Quarter Change
Total	3,959	-6 -0.2%	-169 -4.1%
Pike	956	+25 -2.6%	-34 -3.4%
Harlan	851	+24 +2.9%	-47 -5.2%
Perry	672	-47 -6.5%	-47 -6.5%
Bell	343	+5 +1.5%	-15 -4.2%
Floyd	251	+20 +8.7%	+7 +2.9%
Leslie	241	-17 -6.6%	-14 -5.5%
Letcher	145	+64 +79.0%	+38 +35.5%
Knott	106	+4 +3.9%	-13 -10.9%
Whitley	92	-32 -25.8%	-14 -13.2%
Martin	91	+60 +193.6%	+10 +12.4%
Magoffin	39	-8 -17.0%	+0 +0.0%
Boyd	37	+7 +23.3%	-1 -2.6%
Knox	37	-33 -47.1%	-17 -31.5%
Johnson	27	-30 -52.6%	-21 -43.8%
Lawrence	22	-3 -12.0%	-9 -29.0%
Clay	20	+6 +42.9%	+5 +33.3%
Breathitt	14	-1 -6.7%	+1 +7.7%
Morgan	8	+2 +33.3%	+1 +14.3%
McCreary	4	+0 +0.0%	+0 +0.0%
Laurel	2	-3 -60.0%	+0 +0.0%
Lee	1	- -	- -

West KY	Q1	YOY Change	Quarter Change
Total	2,562	+216 +9.2%	-12 -0.5%
Union	879	+198 +29.1%	+87 +11.0%
Hopkins	439	-12 -2.7%	-32 -6.8%
Muhlenberg	371	+46 +14.2%	-31 -7.7%
Ohio	333	+13 +4.1%	+13 +4.1%
Webster	237	-61 -20.5%	-71 -23.1%
McLean	215	+33 +18.1%	+25 +13.2%
Marshall	51	+6 +13.3%	+0 +0
Daviess	24	-2 -7.7%	-2 -7.7%
Livingston	13	+0 +0	-1 -7.1%

Description	Q1	YOY Change	Quarter Change
KY Total	6,521	+210 +3.3%	-181 -2.7%
Underground	3,951	+223 +6.0%	-115 -2.8%
Surface	1,417	-41 -2.8%	-25 -1.7%
Preparation Plant	877	+49 +5.9%	-40 -4.3%
Office	276	-21 -7.1%	-1 -0.4%

Eastern Kentucky coal mines decreased employment by 169 jobs or 4.1 percent on a year-over-year basis. Western Kentucky increased employment by 216 jobs or 9.2 percent on a year over year basis.

During the first quarter of 2019, Kentucky coal mines decreased total employment by 181 jobs, a 2.7 percent drop from the fourth quarter of 2018. On a year-over-year basis, Kentucky coal mines increased total employment by 3.3 percent or 210 jobs.

For more information about coal, please visit:

[energy.ky.gov/Pages/CoalFacts.aspx](http://energy.ky.gov/Pages/CoalFacts.aspx)

Date		Kentucky Total				Eastern Kentucky				Western Kentucky								
		Average		Tons of Coal		Average		Tons of Coal		Average		Tons of Coal						
		Employment		Produced		Employment		Produced		Employment		Produced						
		Annual	Quarter	Annual	Quarter	Annual	Quarter	Annual	Quarter	Annual	Quarter	Annual	Quarter					
2010	Q1	17,115	16,378	105,554,104	26,304,890	13,020	12,404	68,222,672	16,883,820	4,095	3,974	37,331,432	9,421,068					
	Q2		17,217											26,510,520	13,051	17,339,430	4,166	9,171,091
	Q3		17,517											26,682,350	13,308	17,187,870	4,209	9,494,482
	Q4		17,796											25,972,700	13,484	16,727,910	4,312	9,244,791
2011	Q1	18,069	17,684	109,018,240	27,889,220	13,679	13,331	68,007,480	17,282,860	4,390	4,353	41,010,760	10,606,360					
	Q2		18,191											27,222,030	13,695	17,385,220	4,496	9,836,813
	Q3		18,810											27,804,080	14,301	17,340,210	4,509	10,463,880
	Q4		18,087											26,047,990	13,581	15,944,280	4,506	10,103,710
2012	Q1	15,622	17,932	91,358,160	26,571,280	11,117	13,203	49,311,848	15,171,750	4,505	4,729	42,046,316	11,399,530					
	Q2		16,278											22,924,670	11,731	12,568,670	4,547	10,356,000
	Q3		14,406											21,173,110	9,892	11,094,450	4,514	10,078,670
	Q4		14,107											20,555,240	9,564	10,343,130	4,543	10,212,120
2013	Q1	12,550	13,223	80,359,000	20,590,860	8,239	8,897	39,480,036	10,144,620	4,310	4,326	40,878,964	10,446,240					
	Q2		12,882											20,752,660	8,490	10,464,560	4,392	10,288,110
	Q3		12,548											19,876,820	8,180	9,667,612	4,368	10,209,210
	Q4		11,892											19,081,980	7,443	9,146,575	4,449	9,935,408
2014	Q1	11,508	11,790	77,468,336	19,494,440	7,242	7,366	37,499,304	8,969,519	4,267	4,424	39,969,028	10,524,930					
	Q2		11,574											19,864,630	7,447	10,240,600	4,127	9,624,035
	Q3		11,681											19,866,500	7,239	9,742,734	4,442	10,123,770
	Q4		11,619											18,204,500	7,186	8,508,199	4,433	9,696,298
2015	Q1	9,493	10,465	61,424,920	16,938,520	5,897	6,639	28,000,918	7,788,933	3,597	3,826	33,424,002	9,149,591					
	Q2		9,674											15,817,610	5,958	7,421,363	3,716	8,396,251
	Q3		9,094											15,574,200	5,579	6,867,600	3,515	8,706,595
	Q4		8,401											12,884,260	5,077	5,712,695	3,324	7,171,565
2016	Q1	6,580	7,022	42,773,250	11,407,838	3,860	4,087	16,889,605	4,643,300	2,720	2,935	25,883,645	6,764,538					
	Q2		6,539											9,928,305	3,835	3,989,977	2,704	5,938,328
	Q3		6,302											10,276,810	3,692	3,812,385	2,610	6,464,425
	Q4		6,456											11,160,297	3,824	4,443,943	2,632	6,716,354
2017	Q1	6,610	6,556	41,772,547	11,453,590	4,050	3,962	18,166,989	4,693,886	2,560	2,594	23,605,558	6,759,704					
	Q2		6,566											10,548,621	3,962	4,599,698	2,604	5,948,923
	Q3		6,669											9,808,457	4,127	4,225,133	2,542	5,583,324
	Q4		6,649											9,961,879	4,150	4,648,272	2,499	5,313,607
2018	Q1	6,442	6,311	39,777,967	10,248,836	3,996	3,965	17,131,075	4,491,083	2,445	2,346	22,646,892	5,757,753					
	Q2		6,303											9,954,929	3,972	4,348,982	2,331	5,605,947
	Q3		6,450											9,733,857	3,920	4,170,171	2,530	5,563,686
	Q4		6,702											9,840,345	4,128	4,120,839	2,574	5,719,506
2019	Q1		6,521		10,019,590		3,959		3,905,263		2,562		6,114,327					

In order to provide the public with timely access to these data, this report uses the best-available estimate for each factor at the time of publication. Data for Q1-2019 are preliminary and subject to revision. Data for previous dates have been revised.

This report is produced by the Kentucky Energy and Environment Cabinet using data from numerous sources including the U.S. Department of Labor's Mine Safety Health Administration, the Kentucky Department of Revenue, and the Kentucky Division of Mine Safety.